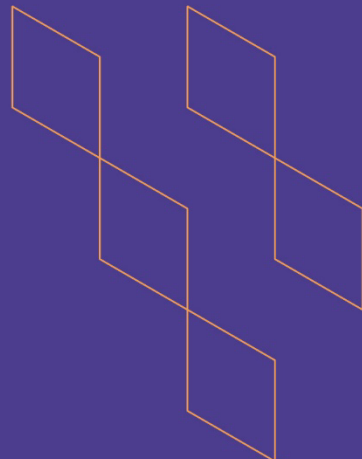




T-104
2022

Course Specification



Course Title: Interior Architecture Heritage of Saudi Arabia
(تراث العمارة الداخلية بالمملكة العربية السعودية)

Course Code: DES 682

Program: Interior Design Program

Department: Architecture Department

College: College of Engineering and Information Technology

Institution: Onaizah Private Colleges

Version: Third Version

Last Revision Date: 2025-05-20

Previous Course Specification

<https://drive.google.com/file/d/14gDidwkRc8ahB0DDZ1p0aiebX7y3TrMV/view>



Table of Contents:

Content	Page
A. General Information about the course	3
1. Teaching mode	3
2. Contact Hours (based on the academic semester)	3
Course Learning Outcomes (CLOs), Teaching Strategies and Assessment Methods	5
C. Course Content	7
D. Student Assessment Activities	9
E. Learning Resources and Facilities	10
1. References and Learning Resources	10
2. Required Facilities and Equipment	10
F. Assessment of Course Quality	11
G. Specification Approval Data	12

A. General information about the course:

Course Identification	
1. Credit hours:	2 Credit Hours [Theoretical]
2. Course type	
a. University <input type="checkbox"/>	College <input type="checkbox"/> Department <input checked="" type="checkbox"/> Track <input type="checkbox"/> Others <input type="checkbox"/>
b. Required <input type="checkbox"/>	Elective <input checked="" type="checkbox"/>
3. Level/year at which this course is offered:	Sixth Level / Third Year
4. Course general Description	
<p>This course examines the historical development and regional diversity of interior architecture across the Kingdom of Saudi Arabia. It introduces students to the cultural, environmental, social, and religious factors that shaped traditional interior spaces, spatial layouts, material choices, and decorative practices. Emphasis is placed on vernacular design strategies that respond to local climate, lifestyle, and social structures, highlighting key elements such as mashrabiyas, courtyards, Arabic calligraphy, ceiling treatments, color palettes, and regional furniture. Students engage in visual analysis, site documentation, and comparative studies across regions such as Najd, Hejaz, and Asir to identify distinctive heritage characteristics. The course promotes critical thinking about preserving and reinterpreting traditional values in contemporary interior design, enabling students to propose culturally responsive spatial solutions grounded in the contemporary repurposing of Saudi heritage.</p>	
5. Pre-requirements for this course (if any):	
None	
6. Co- requirements for this course (if any):	
None	
7. Course Main Objective(s)	
<p>The aim of this course is to provide students with a comprehensive understanding of the historical, cultural, and environmental factors that have shaped traditional interior architecture across the diverse regions of Saudi Arabia. Students will identify key characteristics of heritage interiors, including spatial organization, materials, decorative finishes, and traditional furniture elements. Emphasis is placed on analyzing how social structure, climate, and religious practices influenced vernacular design. Through visual analysis and documentation exercises, students will explore regional distinctions such as those found in Najd, Hejaz, and Asir. The course encourages students to critically assess the relevance of heritage principles in contemporary interior design and to apply this knowledge in developing culturally responsive design proposals that preserve and reinterpret Saudi identity within modern interior environments.</p>	

1. Teaching mode

No.	Mode of Instruction	Contact Hours	Percentage
1	Traditional classroom		
2	E-learning		
3	Hybrid <ul style="list-style-type: none"> Traditional classroom 		

No.	Mode of Instruction	Contact Hours	Percentage
	• E-learning		
4	Distance learning	30	100%

2. Contact Hours (based on the academic semester)

No.	Activity	Contact Hours
1	Lectures	30
2	Laboratory/Studio	
3	Field	
4	Tutorial	
5	Others (specify)	
Total		30

B. Course Learning Outcomes (CLOs), Teaching Strategies and Assessment Methods

Code	Course Learning Outcomes	Code of CLOs aligned with program	Teaching Strategies	Assessment Methods
1.0	Knowledge and understanding			
DES 682.C L0.K.1	Identify key interior design elements by analyzing components of Saudi heritage architecture as part of the design research process	K.3(التصميم برنامج) الداخلي Interior Design)	Primary: Lecture Additional: Research (Individual or Group)	Formative: Quiz (online or F2F) Summative: Written Exam (MCQ or Essay / F2F or Online)
DES 682.C L0.K.2	Discuss traditional environmental strategies used in Saudi heritage interior architecture to enhance indoor environmental quality and occupant comfort	K.4(التصميم برنامج) الداخلي Interior Design)	Primary: Research (Individual or Group) Additional: Lecture	Formative: Homework Summative: Research Summary (Rubric)
2.0	Skills			
DES 682.C L0.S.1	Analyze traditional heritage motifs and evaluate their reinterpretation within contemporary interior design concepts	S.4(التصميم برنامج) الداخلي Interior Design)	Primary: Project or Research (Individual or Group) Additional: Discussion (or similar active learning strategies)	Formative: Research Assessment (Rubric) Summative: Case Study (Individual or Group) (Rubric)
3.0	Values, Autonomy, and Responsibility			

Code	Course Learning Outcomes	Code of CLOs aligned with program	Teaching Strategies	Assessment Methods
DES 682.C LO.V.1	Apply ethical standards and professional values in the analysis and preservation of heritage interior design elements	٧.٢ (التصميم برنامج) الداخلي Interior Design)	Primary: Independent Study or Research Additional: Discussion (or similar active learning strategies)	Formative: Observation (Instructor/ Students/ Committee) (Rubric) Summative: Case Study (Individual or Group)



C. Course Content

No.	List of Topics	Contact Hours
1	<u>Introduction to Saudi Heritage and Vernacular Architecture:</u> <ul style="list-style-type: none"> - Definition and importance of heritage in interior design. - Overview of traditional Saudi architecture and its regional diversity. 	2
2	<u>Regional Characteristics of Interior Architecture in Saudi Arabia:</u> <ul style="list-style-type: none"> - Comparative study: Najd, Hijaz, Asir, Eastern Province. - Cultural and environmental influences on spatial organization. 	2
3	<u>Historical Evolution of Saudi Domestic Interiors:</u> <ul style="list-style-type: none"> - Pre-Islamic to Islamic transitions. - Social, religious, and tribal influences on space usage and layout. 	2
4	<u>Spatial Planning in Traditional Saudi Homes:</u> <ul style="list-style-type: none"> - Layouts: majlis, courtyards, entrances, and family zones. - Privacy and gendered space organization. 	2
5	<u>Traditional Interior Materials and Construction Techniques:</u> <ul style="list-style-type: none"> - Earth, stone, palm wood, gypsum, and mudbrick. - Vernacular construction methods and regional preferences. 	2
6	<u>Interior Decorative Elements and Finishes:</u> <ul style="list-style-type: none"> - Stucco carving, hand-painted wood, gypsum work, plaster painting. - Functional and aesthetic roles in traditional interiors. 	2
7	<u>Arabic Calligraphy and Symbolism in Heritage Interiors:</u> <ul style="list-style-type: none"> - Use of inscriptions, verses, and motifs in interior decoration. - Cultural and religious significance. 	2
8	<u>Islamic Geometric and Floral Patterns:</u> <ul style="list-style-type: none"> - Proportion, symmetry, and repetition. - Ornamentation in ceilings, windows, mashrabiya, and flooring. 	2
9	<u>Climate-Responsive Interior Solutions:</u> <ul style="list-style-type: none"> - Passive cooling strategies, ventilation towers, courtyards. - Material selection based on thermal performance. 	2
10	<u>Traditional Furniture and Furnishings:</u> <ul style="list-style-type: none"> - Floor seating, wooden chests, textiles, carpets. - Local craftsmanship and functional forms. 	2
11	<u>Ethical Approaches to Heritage Preservation:</u> <ul style="list-style-type: none"> - Interior designer's role in protecting cultural identity. 	2



	- Ethical use of heritage in contemporary design.	
12	<u>Contemporary Applications of Heritage in Interior Design:</u> <ul style="list-style-type: none"> - Adaptive reuse, reinterpretation of traditional elements. - Case studies of modern projects inspired by heritage. 	2
13	<u>Site Documentation and Visual Analysis:</u> <ul style="list-style-type: none"> - Drawing, photographing, and analyzing heritage interiors. - Techniques for documenting patterns, materials, and structure. 	2
14	<u>Group Presentation: Regional Heritage Interior Study:</u> <ul style="list-style-type: none"> - Student-led presentations analyzing one region's interior heritage. - Discussion and peer feedback. 	2
15	<u>Final Review and Reflective Dialogue:</u> <ul style="list-style-type: none"> - Summary of key learnings. - Heritage's role in shaping culturally responsive interior design. 	2
Total		30





D. Students Assessment Activities

No.	Assessment Activities*	Assessment Timing (in Week No.)	Percentage of Total Assessment Score
1	Research Assessment (Rubric)	7 th	5%
2	Research Summary (Rubric)	3 rd	5%
3	Written Exam (Midterm Exam) (MCQ or Essay / F2F or Online)	8 th - 10 th	25%
4	Written Exam (Final Exam) (MCQ or Essay / F2F or Online)	16 th	45%
5	Quiz (Online or F2F)	4 th	5%
6	Homework	10 th	5%
7	Observation (Instructor/ Students/ Committee) (Rubric) + Case Study (Individual or Group)	14 th	5%
8	Case Study (Individual or Group) (Rubric)	12 th	5%
			100%

*Assessment Activities (i.e., Written test, oral test, oral presentation, group project, essay, etc.)



E. Learning Resources and Facilities

1. References and Learning Resources

Essential References	<ul style="list-style-type: none"> - Conservation of Historic Buildings, By Bernard Feilden, 2007. - Saving Our Architectural Heritage: The Conservation of Historic Stone Structures, By N. S. Baer, R. Snethlage, 1997. - Historic Preservation Technology, Young, Robert A., 2008.
Supportive References	None.
Electronic Materials	<ul style="list-style-type: none"> - National Park Service. United States Secretary of the Interior's: Standards for the Treatment of Historic Properties, available at www.nps.gov/history/hps/tps/standguide/ - Illustrated Guidelines for Rehabilitating Historic Buildings, available at www.nps.gov/history/hps/tps//tax/rhb/index.htm
Other Learning Materials	None.

2. Required Facilities and Equipment

Items	Resources
Facilities (Classrooms, Laboratories, Exhibition Rooms, Simulation Rooms, etc.)	Lecture Hall.
Technology Equipment (Projector, Smart Board, Software)	Data Show, Smart Board, Applications Software.
Other Equipment (Depending on the nature of the specialty)	None.

F. Assessment of Course Quality

Assessment Areas/Issues	Assessor	Assessment Methods
Effectiveness of teaching	Peer Reviewer	Direct (peer classroom observation according to the approved Rubric)
Effectiveness of students' assessment	Faculty/Instructor	Direct (analysis of CLOs assessment results and grade distributions)
Quality of learning resources	Students	Indirect (course evaluation survey)
The extent to which CLOs have been achieved	Faculty/Instructor	Direct (CLOs assessment and analysis of results according to CLOs targets)
	Students	Indirect (Students through course evaluation survey)
Commitment to learning and teaching strategies and assessment methods included in the program and course specifications	Peer Reviewer	Direct (Peer- classroom observation according to the approved Rubric in OC-QMS)
	Department Chair through Students Focus Groups	Indirect (Chair – survey questions to a focus group of students according to OC QMS)
Action Plan Continuity (Closing the Loop)	QAC (Quality Assurance Committee)	Direct (periodic review of course reports and submitting comments to course instructor/coordinator)
Instructor's Support to Students	Students	Indirect (course evaluation survey)

Assessor (Students, Faculty, Program Leaders, Peer Reviewer, Others (specify))

Assessment Methods (Direct, Indirect)



G. Specification Approval Data

COUNCIL /COMMITTEE	Department of Architecture Council
REFERENCE NO.	11
DATE	2023-05-09

Learning outcomes of this course, as well as CLOs/Teaching Strategies/Assessment Methods matrix have been evaluated and reviewed by multiple OC parties according to OC-QMS. You can access results of these final reviews by scanning the QR code on the right, which contains a link to the reviews on OC-E-QMS.



[Click Here](#)

