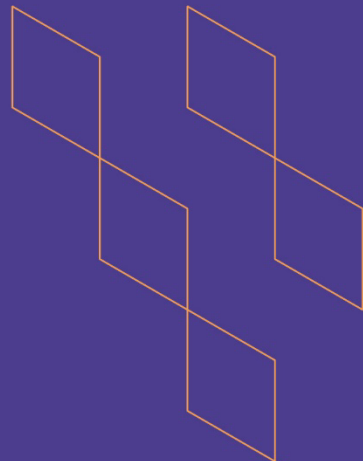




T-104
2022

Course Specification



Course Title: Perspective and Shadow (الظل والمنظور)
Course Code: IND 333
Program: Interior Design Program
Department: Architecture Department
College: College of Engineering and Information Technology
Institution: Onaizah Private Colleges
Version: Third Version
Last Revision Date: 2025-05-20

Previous Course Specification

<https://drive.google.com/file/d/1gcs8n8DuzsdYLOuZ4jjRadbRiVX03tAz/view>



Table of Contents:

Content	Page
A. General Information about the course	3
1. Teaching mode	3
2. Contact Hours (based on the academic semester)	3
Course Learning Outcomes (CLOs), Teaching Strategies and Assessment Methods	5
C. Course Content	6
D. Student Assessment Activities	8
E. Learning Resources and Facilities	9
1. References and Learning Resources	9
2. Required Facilities and Equipment	9
F. Assessment of Course Quality	10
G. Specification Approval Data	11

A. General information about the course:

Course Identification	
1. Credit hours:	2 Credit Hours [1 Theoretical + 1 Practical]
2. Course type	
a. University <input type="checkbox"/>	College <input type="checkbox"/> Department <input checked="" type="checkbox"/> Track <input type="checkbox"/> Others <input type="checkbox"/>
b. Required <input checked="" type="checkbox"/>	Elective <input type="checkbox"/>
3. Level/year at which this course is offered:	Third Level / Second Year
4. Course general Description	
<p>This course introduces students to the fundamental principles of perspective and shadow as essential tools for visualizing and representing interior spaces. Students will learn to construct one-point, two-point, and three-point perspectives to accurately depict spatial depth, scale, and proportion within interior environments. Emphasis is placed on the application of light, shade, and shadow to enhance realism, depth, and atmosphere in design drawings. Through structured exercises, students will develop precision in technical drawing and gain an understanding of how light interacts with form and space. The course focuses on shadow projection, tonal variation, and the integration of perspective with shading techniques to produce expressive and communicative design visuals. By the end of the course, students will be able to generate visually compelling drawings that effectively convey spatial relationships, material qualities, and lighting effects in interior design compositions.</p>	
5. Pre-requirements for this course (if any):	
None	
6. Co- requirements for this course (if any):	
IND 331, IND 332.	
7. Course Main Objective(s)	
<p>The objective of this course is to develop students' skills in constructing accurate perspective drawings and applying light and shadow techniques to interior spaces. The course aims to enhance students' ability to visually communicate depth, volume, and spatial relationships through technical drawing methods, enabling them to produce realistic and expressive interior design illustrations.</p>	

1. Teaching mode

No.	Mode of Instruction	Contact Hours	Percentage
1	Traditional classroom	45	100%
2	E-learning		
3	Hybrid <ul style="list-style-type: none"> Traditional classroom E-learning 		
4	Distance learning		

2. Contact Hours (based on the academic semester)

No.	Activity	Contact Hours
1	Lectures	15
2	Laboratory/Studio	30
3	Field	
4	Tutorial	
5	Others (specify)	
Total		45



B. Course Learning Outcomes (CLOs), Teaching Strategies and Assessment Methods

Code	Course Learning Outcomes	Code of CLOs aligned with program	Teaching Strategies	Assessment Methods
1.0	Knowledge and understanding			
IND 333.C LO.K.1	Define basic interior design principles, concepts, and theories, and recognize their relationship to architecture and engineering using appropriate visual tools	K.1 Interior Design)	Primary: Lecture Additional: Video	Formative: Homework Summative: Student Portfolio
2.0	Skills			
IND 333.C LO.S.1	Create interior design drawings using appropriate drawing tools and techniques	S.5(Interior Design)	Primary: Lab Work/Experiment Additional: Tutorial	Formative: Project Assessment (Rubric) Summative: Student Portfolio
3.0	Values, Autonomy, and Responsibility			
IND 333.C LO.V.1	Demonstrate responsibility and independence in participating in interior design decision-making using appropriate tools	V.3(Interior Design)	Primary: Lab Work/Experiment Additional: Discussion (or similar active learning strategies)	Formative: Oral Exam or Interview (Rubric) Summative: Student Portfolio

C. Course Content

No.	List of Topics	Contact Hours
1	- Introduction to Perspective and Shadow in Interior Design: Purpose, Tools, and Visual Impact. Overview discussion + tool orientation; basic sketching warm-up.	3
2	- Eye Level, Horizon Line, and Vanishing Points – Fundamentals of Spatial Perception. Draw simple boxes using horizon line and vanishing points.	3
3	- Simple geometric forms: Study of the structure drawing. - Angle view and perspective drawing	3
4	- Shadow Principles: Types of Shadows (Cast, Form, Core), Shadow Direction and Length. - Drawing of geometric volumes and shadow projection.	3
5	Isometric perspective.	3
6	- One-Point Perspective: Interior Room Depth and Layout Drawing Study. Sketch a simple room interior using one-point perspective.	3
7	- Perspective drawing with one vanishing point. Practice sketching furniture within a perspective interior.	3
8	Drawing of external building view with one vanishing point.	3
9	- Two-Point Perspective: Drawing Corners, Furniture, and Walls in Space. Draw a corner of a room or furniture in two-point perspective.	3
10	Techniques for Drawing Shadows in One- and Two-Point Perspective Drawings.	3
11	- Study of different representations of two vanishing point. - Perspective with (Eye of a bird)/ Drawing of urban area.	3
12	Three-Point Perspective: High and Low Viewing Angles in Interior Contexts.	3
13	- Rendering Interior Spaces with Light and Shadow for Mood and Depth. Apply shadows to an interior drawing based on a chosen light direction.	3
14	Developing a Perspective Drawing with Shadow and Light.	3



	Select and sketch a perspective view of a designed space for final project.	
15	Final project.	3
Total		45



D. Students Assessment Activities

No.	Assessment Activities*	Assessment Timing (in Week No.)	Percentage of Total Assessment Score
1	Project Assessment (Rubric)	10 th	10%
2	Homework	12 th	35%
3	Student Portfolio	15 th	45%
4	Oral Exam or Interview (Rubric)	8 th	10%
			100%

*Assessment Activities (i.e., Written test, oral test, oral presentation, group project, essay, etc.)





E. Learning Resources and Facilities

1. References and Learning Resources

Essential References	<ul style="list-style-type: none"> - "Perspective Made Easy" by Ernest R. Norling- 1989. - "Shadow and Light: A Guide to Understanding How Light Behaves in Your Artwork" by Michael Wilcox May 17, 2004. - "Drawing and Painting with Colored Light: Shadow and Reflections in Watercolor" by Betty Carr 2009. - "The Complete Guide to Perspective Drawing: From One-Point to Six-Point" by Craig Attebery May 12, 2018.
Supportive References	<ul style="list-style-type: none"> - "The Artist's Guide to Perspective" by Janet Shearer. - "Mastering Composition: Techniques and Principles to Dramatically Improve Your Painting" by Ian Roberts. - "Painting with Light and Shadow: A Complete Guide for Artists" by Rachel Rubin Wolf.
Electronic Materials	<ul style="list-style-type: none"> - https://www.youtube.com/watch?v=IRsXVYjZYVY - https://www.youtube.com/watch?v=k-6lQxWY33A
Other Learning Materials	None.

2. Required Facilities and Equipment

Items	Resources
Facilities (Classrooms, Laboratories, Exhibition Rooms, Simulation Rooms, etc.)	Studio Hall.
Technology Equipment (Projector, Smart Board, Software)	Projector, Smart Board, Software.
Other Equipment (Depending on the nature of the specialty)	None.



F. Assessment of Course Quality

Assessment Areas/Issues	Assessor	Assessment Methods
Effectiveness of teaching	Peer Reviewer	Direct (peer classroom observation according to the approved Rubric)
Effectiveness of students' assessment	Faculty/Instructor	Direct (analysis of CLOs assessment results and grade distributions)
Quality of learning resources	Students	Indirect (course evaluation survey)
The extent to which CLOs have been achieved	Faculty/Instructor	Direct (CLOs assessment and analysis of results according to CLOs targets)
	Students	Indirect (Students through course evaluation survey)
Commitment to learning and teaching strategies and assessment methods included in the program and course specifications	Peer Reviewer	Direct (Peer- classroom observation according to the approved Rubric in OC-QMS)
	Department Chair through Students Focus Groups	Indirect (Chair – survey questions to a focus group of students according to OC QMS)
Action Plan Continuity (Closing the Loop)	QAC (Quality Assurance Committee)	Direct (periodic review of course reports and submitting comments to course instructor/coordinator)
Instructor's Support to Students	Students	Indirect (course evaluation survey)

Assessor (Students, Faculty, Program Leaders, Peer Reviewer, Others (specify))

Assessment Methods (Direct, Indirect)



G. Specification Approval Data

COUNCIL /COMMITTEE	Department of Architecture Council
REFERENCE NO.	11
DATE	2023-05-09

Learning outcomes of this course, as well as CLOs/Teaching Strategies/Assessment Methods matrix have been evaluated and reviewed by multiple OC parties according to OC-QMS. You can access results of these final reviews by scanning the QR code on the right, which contains a link to the reviews on OC-E-QMS.



[Click Here](#)

