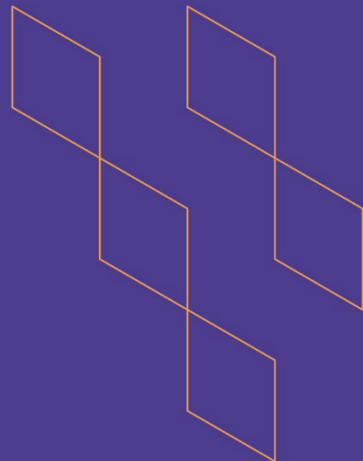




T-104
2022

Course Specification



Course Title: Graduation Project (مشروع التخرج)

Course Code: IND 838

Program: Interior Design Program

Department: Architecture Department

College: College of Engineering and Information Technology

Institution: Onaizah Private Colleges

Version: Third Version

Last Revision Date: 2025-05-20

Previous Course Specification

<https://drive.google.com/file/d/1jaenSvmc3mVc8eblx1yK-pLUoDpG7ziN/view>



Table of Contents:

Content	Page
A. General Information about the course	3
1. Teaching mode	3
2. Contact Hours (based on the academic semester)	3
Course Learning Outcomes (CLOs), Teaching Strategies and Assessment Methods	5
C. Course Content	7
D. Student Assessment Activities	9
E. Learning Resources and Facilities	10
1. References and Learning Resources	10
2. Required Facilities and Equipment	10
F. Assessment of Course Quality	11
G. Specification Approval Data	12

A. General information about the course:

Course Identification	
1. Credit hours:	6 Credit Hours [1 Theoretical + 5 Practical]
2. Course type	
a. University <input type="checkbox"/>	College <input type="checkbox"/> Department <input checked="" type="checkbox"/> Track <input type="checkbox"/> Others <input type="checkbox"/>
b. Required <input checked="" type="checkbox"/>	Elective <input type="checkbox"/>
3. Level/year at which this course is offered:	Eighth Level / Fourth Year
4. Course general Description	
<p>The Graduation Project serves as the capstone course of the Interior Design program, enabling students to synthesize their academic learning, technical proficiency, and creative problem-solving skills to address a complex, real-world interior design challenge. Building upon the preparatory work completed in the Graduation Project Studies course, students independently manage the design process from conceptual development to final execution. The course emphasizes advanced competencies in spatial planning, material specification, detailing, sustainability integration, and user-centered design. Students are expected to produce a comprehensive design package, including research documentation, programming, conceptual and schematic design, construction drawings, and final presentation boards. Throughout the semester, students participate in scheduled critiques, receive feedback through juried reviews, and conclude with a formal public presentation and submission of a professional-quality portfolio. The course reinforces ethical design practices, critical thinking, and professional readiness for entry into the interior design industry.</p>	
5. Pre-requirements for this course (if any):	
IND 331, IND 332, IND 333, IND 434, IND 535, IND 636, IND 737.	
6. Co- requirements for this course (if any):	
None	
7. Course Main Objective(s)	
<p>This course aims to empower students to demonstrate the culmination of their academic and design development through the creation of a comprehensive interior design project that integrates creativity, technical proficiency, and professional responsibility. Students will apply research methodologies, conceptual thinking, and evidence-based design strategies to address complex spatial, environmental, and user-centered challenges. Through independent project execution, they will refine their ability to formulate coherent design concepts, generate functional and aesthetic solutions, and produce detailed construction documentation and professional-quality visual presentations. The course also focuses on developing effective communication skills, ethical decision-making, and the ability to articulate and defend design proposals in front of peers, faculty, and industry professionals. By the end of the course, students will have a fully realized capstone project and portfolio that reflects their individual design identity and professional readiness for entry into the interior design field.</p>	

1. Teaching mode

No.	Mode of Instruction	Contact Hours	Percentage
1	Traditional classroom	150	100%

No.	Mode of Instruction	Contact Hours	Percentage
2	E-learning		
3	Hybrid <ul style="list-style-type: none"> Traditional classroom E-learning 		
4	Distance learning		

2. Contact Hours (based on the academic semester)

No.	Activity	Contact Hours
1	Lectures	30
2	Laboratory/Studio	120
3	Field	
4	Tutorial	
5	Others (specify)	
Total		150

B. Course Learning Outcomes (CLOs), Teaching Strategies and Assessment Methods

Code	Course Learning Outcomes	Code of CLOs aligned with program	Teaching Strategies	Assessment Methods
1.0	Knowledge and understanding			
IND 838.C L.O.K.1	Explain the interior design process in graduation projects, integrating spatial planning, design standards, user needs, safety provisions, and indoor environmental quality	K.4(التصميم برنامج) الداخلي Interior Design)	Primary: Lecture Additional: Discussion (or similar active learning strategies)	Formative: Research Summary (Rubric) Summative: Student Portfolio
2.0	Skills			
IND 838.C L.O.S.1	Apply design standards and sustainability principles in material and furniture selection through detailed drawings and design documentation	S.1(التصميم برنامج) الداخلي Interior Design)	Primary: Interactive Lecture \ Demonstration (Individual or Group) Additional: Discussion (or similar active learning strategies)	Formative: Practical Assessment (Rubric) Summative: Project Assessment (Rubric)
IND 838.C L.O.S.2	Develop a comprehensive interior design project using professional software tools and digital	S.5(التصميم برنامج) الداخلي Interior Design)	Primary: Interactive Lecture \ Demonstration (Individual or Group)	Formative: Project Assessment (Rubric) Summative: Presentation

Code	Course Learning Outcomes	Code of CLOs aligned with program	Teaching Strategies	Assessment Methods
	presentation techniques		Additional: Project or Research	(Individual or Group) (Rubric)
IND 838.C LO.S.3	Produce technical and construction drawings that reflect functional, aesthetic, and environmental requirements of interior spaces	S.1 (التصميم برنامج) الداخلي Interior Design)	Primary: Project or Research (Individual or Group) Additional: Interactive Lecture \ Demonstration	Formative: Practical Assessment (Rubric) Summative: Presentation (Individual or Group) (Rubric)
3.0	Values, Autonomy, and Responsibility			
IND 838.C LO.V.1	Demonstrate ethical design practices by adhering to professional codes of conduct and safety standards throughout the project development process	V.2 (التصميم برنامج) الداخلي Interior Design)	Primary: Independent Study or Research Additional: Discussion (or similar active learning strategies)	Formative: Observation (Instructor/ Students/ Committee) (Rubric) Summative: Oral Exam or Interview (Rubric)
IND 838.C LO.V.2	Take responsibility for design decisions from concept to final presentation, while managing the graduation project independently and fulfilling all deadlines	V.3 (التصميم برنامج) الداخلي Interior Design)	Primary: Discussion (or similar active learning strategies) Additional: Independent Study or Research	Formative: Observation (Instructor/ Students/ Committee) (Rubric) Summative: Student Portfolio

C. Course Content

No.	List of Topics	Contact Hours
1	<u>Course Introduction & Project Brief Review:</u> <ul style="list-style-type: none"> - Overview of course expectations and outcomes. - Review of graduation project studies and research. - Clarifying project scope, goals, and timelines. 	10
2	<u>Concept Refinement & Design Direction:</u> <ul style="list-style-type: none"> - Revisiting design intent and conceptual narrative. - Establishing a clear design theme and functional goals. - Instructor feedback and peer critique. 	10
3	<u>Site Plan and Analysis Review:</u> <ul style="list-style-type: none"> - Review of selected site and context. - Spatial constraints, orientation, access, and environmental factors. - Incorporation of site data into spatial planning. 	10
4	<u>Spatial Programming and Adjacency Planning:</u> <ul style="list-style-type: none"> - Finalization of space program based on user needs. - Zoning strategies and adjacency diagrams. - Functional flow and space hierarchy. 	10
5	<u>Preliminary Space Planning:</u> <ul style="list-style-type: none"> - Bubble diagrams and schematic layout development. - Circulation flow and accessibility considerations. - First iteration of floor plans. 	10
6	<u>Interior Concept Design and Mood Board Presentation:</u> <ul style="list-style-type: none"> - Visual direction and material inspiration. - Style, tone, and brand identity. - Initial material, finish, and color palette review. 	10
7	<u>Furniture and Equipment Planning:</u> <ul style="list-style-type: none"> - Furniture layout and scale coordination. - FF&E selections aligned with concept and user function. - Compliance with ergonomic and safety standards. 	10
8	<u>Lighting and Environmental Quality:</u> <ul style="list-style-type: none"> - Lighting types, placement, and integration with spatial mood. - Daylight analysis and artificial lighting design. - Indoor environmental quality (IEQ) principles. 	10
9	<u>Sustainability Integration and Material Selection:</u> <ul style="list-style-type: none"> - Eco-friendly material research and specifications. - Application of green design standards. 	10



	- Waste management and environmental impact considerations.	
10	<u>Technical Drawings and Construction Details:</u> <ul style="list-style-type: none"> - Plans, elevations, sections, and RCP development. - Detailing for joinery, materials, and systems integration. - Introduction to construction documents and annotations. 	10
11	<u>Rendering and Visualization:</u> <ul style="list-style-type: none"> - 3D modeling development and refinement. - Rendering software application (SketchUp, 3ds Max, Lumion, etc.). - Material mapping, lighting setup, and final output preparation. 	10
12	<u>Board Composition and Presentation Layout:</u> <ul style="list-style-type: none"> - Graphic presentation of final boards. - Typography, layout balance, and project storytelling. - Portfolio integration and documentation. 	10
13	<u>Final Revisions and Mock Jury:</u> <ul style="list-style-type: none"> - Instructor and peer critique sessions. - Revisions to design, drawings, and boards. - Jury-style practice presentation and feedback. 	10
14	Semi Final Project Submission and Presentation.	10
15	<u>Final Jury Presentation:</u> <ul style="list-style-type: none"> - Formal submission of full design package. - Oral presentation and design defense to faculty panel. - Assessment and reflection on project execution. 	10
Total		150



D. Students Assessment Activities

No.	Assessment Activities*	Assessment Timing (in Week No.)	Percentage of Total Assessment Score
1	Student Portfolio	15 th	45%
2	Project Assessment (Rubric)	14 th	10%
3	Research Summary (Rubric)	7 th	10%
4	Practical Assessment (Rubric)	13 th	10%
5	Presentation (Individual or Group) (Rubric)	10 th	10%
6	Observation (Instructor/ Students/ Committee) (Rubric)	8 th	5%
7	Oral Exam or Interview (Rubric)	15 th	10%
			100%

*Assessment Activities (i.e., Written test, oral test, oral presentation, group project, essay, etc.)



E. Learning Resources and Facilities

1. References and Learning Resources

Essential References	<ul style="list-style-type: none"> - Human Dimension – Anthropometries , John T. MConvlle. Ph.O. - The Fundamental of Interior Architecture, John Coles & Naomi House, AVA Publishing SA, 2007. - Materials and Components of INTERIOR DESIGN, third edition, J. Rosemary Riggs, Regents/ Prentice Hall, New Jersey, 1992. - Journal of Interior Design. - The World of Interiors Journal. - Architectural Record Journal. - Architectural Design Journal. - Architectural Digest Journal. - The Architectural Review Journal. - Architecture and Planning. - Interior Design Magazine.
Supportive References	None.
Electronic Materials	<ul style="list-style-type: none"> - www.smartdrow.com - www.rgconcept.net - www.design-technology.org - www.designpublic.com - www.freshome.com
Other Learning Materials	None.

2. Required Facilities and Equipment

Items	Resources
Facilities (Classrooms, Laboratories, Exhibition Rooms, Simulation Rooms, etc.)	Lecture Hall, Studio Hall, Computer Lab, Gallery Space.
Technology Equipment (Projector, Smart Board, Software)	Computers, Printers, Data Show, Smart Board, Applications Software.
Other Equipment (Depending on the nature of the specialty)	None.

F. Assessment of Course Quality

Assessment Areas/Issues	Assessor	Assessment Methods
Effectiveness of teaching	Peer Reviewer	Direct (peer classroom observation according to the approved Rubric)
Effectiveness of students' assessment	Faculty/Instructor	Direct (analysis of CLOs assessment results and grade distributions)
Quality of learning resources	Students	Indirect (course evaluation survey)
The extent to which CLOs have been achieved	Faculty/Instructor	Direct (CLOs assessment and analysis of results according to CLOs targets)
	Students	Indirect (Students through course evaluation survey)
Commitment to learning and teaching strategies and assessment methods included in the program and course specifications	Peer Reviewer	Direct (Peer- classroom observation according to the approved Rubric in OC-QMS)
	Department Chair through Students Focus Groups	Indirect (Chair – survey questions to a focus group of students according to OC QMS)
Action Plan Continuity (Closing the Loop)	QAC (Quality Assurance Committee)	Direct (periodic review of course reports and submitting comments to course instructor/coordinator)
Instructor's Support to Students	Students	Indirect (course evaluation survey)

Assessor (Students, Faculty, Program Leaders, Peer Reviewer, Others (specify))

Assessment Methods (Direct, Indirect)



G. Specification Approval Data

COUNCIL /COMMITTEE	Department of Architecture Council
REFERENCE NO.	11
DATE	2023-05-09

Learning outcomes of this course, as well as CLOs/Teaching Strategies/Assessment Methods matrix have been evaluated and reviewed by multiple OC parties according to OC-QMS. You can access results of these final reviews by scanning the QR code on the right, which contains a link to the reviews on OC-E-QMS.



[Click Here](#)

