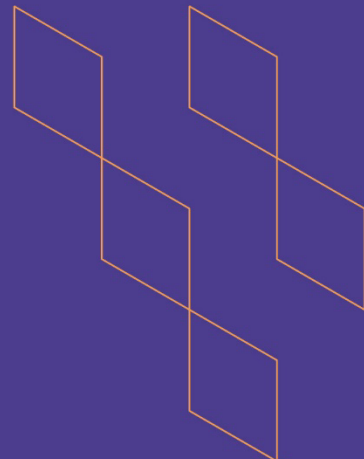




T-104
2022

Course Specification



Course Title: Interior Landscape Design (تنسيق مواقع للبيئات الداخلية)

Course Code: IND 856

Program: Interior Design Program

Department: Architecture Department

College: College of Engineering and Information Technology

Institution: Onaizah Private Colleges

Version: Third Version

Last Revision Date: 2025-05-20

Previous Course Specification

https://drive.google.com/file/d/15VEskcrA_UKCuGgt-SK2DPHa5GWnXpyW/view



Table of Contents:

Content	Page
A. General Information about the course	3
1. Teaching mode	3
2. Contact Hours (based on the academic semester)	3
Course Learning Outcomes (CLOs), Teaching Strategies and Assessment Methods	5
C. Course Content	8
D. Student Assessment Activities	9
E. Learning Resources and Facilities	10
1. References and Learning Resources	10
2. Required Facilities and Equipment	10
F. Assessment of Course Quality	11
G. Specification Approval Data	12

A. General information about the course:

Course Identification	
1. Credit hours:	2 Credit Hours
2. Course type	
a. University <input type="checkbox"/>	College <input type="checkbox"/> Department <input checked="" type="checkbox"/> Track <input type="checkbox"/> Others <input type="checkbox"/>
b. Required <input checked="" type="checkbox"/>	Elective <input type="checkbox"/>
3. Level/year at which this course is offered:	Eighth Level / Fourth Year
4. Course general Description	
<p>This course introduces students to the principles and practices of interior landscape design, with a focus on the integration of natural elements into interior environments to enhance spatial quality, user well-being, and environmental sustainability. Students will examine the aesthetic, functional, and ecological roles of plants within interior spaces, exploring biophilic design strategies that support human comfort and indoor air quality. Key topics include plant selection and placement, lighting and irrigation requirements, maintenance needs, and the design of interior green features such as vertical gardens, indoor planters, and living wall systems. Emphasis is placed on designing with living materials to achieve visual harmony and environmental benefits. Through theoretical exploration and project-based applications, students will develop comprehensive interior landscape proposals across various typologies, including residential, commercial, and hospitality settings.</p>	
5. Pre-requirements for this course (if any):	
None	
6. Co- requirements for this course (if any):	
None	
7. Course Main Objective(s)	
<p>The objective of this course is to develop students' understanding of the principles, aesthetics, and functional benefits of interior landscape design. It aims to equip students with the knowledge and skills necessary to integrate plant elements into interior spaces in ways that enhance spatial quality, promote environmental sustainability, and support user well-being. Emphasis is placed on plant selection, placement strategies, lighting and irrigation requirements, and maintenance considerations, along with the environmental and psychological impacts of greenery in built environments. Through theoretical exploration and hands-on design applications, students will learn to develop thoughtful, contextually appropriate, and responsible interior landscape solutions for residential, commercial, and institutional settings.</p>	

1. Teaching mode

No.	Mode of Instruction	Contact Hours	Percentage
1	Traditional classroom	30	100%
2	E-learning		
3	Hybrid <ul style="list-style-type: none"> Traditional classroom E-learning 		

No.	Mode of Instruction	Contact Hours	Percentage
4	Distance learning		

2. Contact Hours (based on the academic semester)

No.	Activity	Contact Hours
1	Lectures	30
2	Laboratory/Studio	
3	Field	
4	Tutorial	
5	Others (specify)	
Total		30



B. Course Learning Outcomes (CLOs), Teaching Strategies and Assessment Methods

Code	Course Learning Outcomes	Code of CLOs aligned with program	Teaching Strategies	Assessment Methods
1.0	Knowledge and understanding			
IND 856.C L.O.K.1	Explain landscape design approaches using interior design planning and concept development methodologies	K.3(التصميم برنامج) الداخلي Interior Design)	Primary: Lecture Additional: Discussion (or similar active learning strategies \ F2F or Online)	Formative: Research Summary (Rubric) Summative: Student Portfolio
2.0	Skills			
IND 856.C L.O.S.1	Evaluate the development of landscape design concepts through various design phases, considering environmental conditions and spatial requirements	S.4(التصميم برنامج) الداخلي Interior Design)	Primary: Interactive Lecture \ Demonstration Additional: Project or Research (Individual or Group)	Formative: Practical Assessment (Rubric) Summative: Project Assessment (Rubric)
IND 856.C L.O.S.2	Analyze the relationship between design program and site conditions through critical evaluation of landscape project concepts	S.4(التصميم برنامج) الداخلي Interior Design)	Primary: Project or Research (Individual or Group) Additional: Interactive Lecture \ Demonstration	Formative: Project Assessment (Rubric) Summative: Research Assessment (Rubric)
IND 856.C L.O.S.3	Develop and apply technical skills to support the	S.4(التصميم برنامج) الداخلي Interior Design)	Primary: Interactive Lecture \ Demonstration	Formative: Case Study (Individual or Group) (Rubric)



Code	Course Learning Outcomes	Code of CLOs aligned with program	Teaching Strategies	Assessment Methods
	critical evaluation and execution of landscape design concepts		Additional: Discussion (or similar active learning strategies)	Summative: Presentation (Individual or Group) (Rubric)
IND 856.C LO.S.4	Create 2D and 3D spatial compositions integrating landform, vegetation, and structural elements using appropriate digital and manual design tools	S.5(التصميم برنامج) الداخلي Interior Design)	Primary: Lab Work/Experiment Additional: Interactive Lecture \ Demonstration	Formative: Practical Assessment (Rubric) Summative: Project Assessment (Rubric)
IND 856.C LO.S.5	Design interior landscape projects using graphic, verbal, and written communication techniques to effectively present spatial concepts	S.5(التصميم برنامج) الداخلي Interior Design)	Primary: Project or Research (Individual or Group) Additional: Interactive Lecture \ Demonstration	Formative: Project Assessment (Rubric) Summative: Student Portfolio
IND 856.C LO.S.6	Develop landscape design solutions through the application of appropriate materials, technical skills, and effective graphic, written, and verbal communication techniques	S.5(التصميم برنامج) الداخلي Interior Design)	Primary: Lab Work/Experiment Additional: Discussion (or similar active learning strategies)	Formative: Project Assessment (Rubric) Summative: Student Portfolio



Code	Course Learning Outcomes	Code of CLOs aligned with program	Teaching Strategies	Assessment Methods
3.0	Values, Autonomy, and Responsibility			
IND 856.C LO.V.1	Participate actively in class discussions and collaborative activities related to interior landscape projects to promote shared learning and design advancement	V.1 التصميم برنامج) الداخلي Interior Design)	Primary: Discussion (or similar active learning strategies) Additional: Independent Study or Research	Formative: Observation (Instructor/ Students/ Committee) (Rubric) Summative: Oral Exam or Interview (Rubric)
IND 856.C LO.V.2	Engage in group discussions to communicate and apply landscape design concepts using appropriate verbal, visual, and written techniques	V.1 التصميم برنامج) الداخلي Interior Design)	Primary: Group Work (competitive or cooperative / Online or F2F) Additional: Discussion (or similar active learning strategies)	Formative: Observation (Instructor/ Students/ Committee) (Rubric) Summative: Oral Exam or Interview (Rubric)
IND 856.C LO.V.3	Demonstrate understanding of the landscape design process by participating in discussions and collaborative activities that promote disciplinary knowledge and teamwork	V.1 التصميم برنامج) الداخلي Interior Design)	Primary: Independent Study or Research Additional: Discussion (or similar active learning strategies)	Formative: Case Study (Individual or Group) Summative: Student Portfolio

C. Course Content

No.	List of Topics	Contact Hours
1	Introduction to interior landscape design: Definitions, scope, and importance.	2
2	History and evolution of landscape elements in interior design.	2
3	Benefits of indoor plants: Psychological, aesthetic, and environmental.	2
4	Basic plant biology: Types of indoor plants and their requirements.	2
5	Plant selection for interior environments: light, humidity, temperature, and scale.	2
6	Plant placement and composition: balance, rhythm, and visual harmony.	2
7	Indoor planting systems: freestanding planters, hanging plants, and built ins.	2
8	Vertical gardens and green walls: design, structure, and maintenance.	2
9	Irrigation, drainage, and maintenance systems for indoor plantings.	2
10	Lighting design for indoor landscapes: natural vs. artificial.	2
11	Materials and containers: aesthetics, function, and sustainability.	2
12	Biophilic design principles in interior landscaping.	2
13	Interior landscape applications: residential, commercial, hospitality.	2
14	Final project development: interior landscape proposal and design presentation.	2
15	Final project submission and critique.	2
Total		30



D. Students Assessment Activities

No.	Assessment Activities*	Assessment Timing (in Week No.)	Percentage of Total Assessment Score
1	Research Assessment (Rubric)	3 rd	5%
2	Midterm	8 th	25%
3	Student Portfolio	15 th	45%
4	Project Assessment (Rubric) + Practical Assessment (Rubric)	13 th	5%
5	Research Summary (Rubric)	6 th	5%
6	Presentation (Individual or Group) (Rubric) + Case Study (Individual or Group) (Rubric)	11 th	5%
7	Observation (Instructor/ Students/ Committee) (Rubric) + Oral Exam or Interview (Rubric)	15 th	5%
8	Case Study (Individual or Group)	10 th	5%
			100%

*Assessment Activities (i.e., Written test, oral test, oral presentation, group project, essay, etc.)



E. Learning Resources and Facilities

1. References and Learning Resources

Essential References	<ul style="list-style-type: none"> - Bell, Simon, 1993. Elements of Visual Design in the Landscape. E&FN Spon, London. - Harris, Charles W. & Dines, Nicholas T., 1995. Time Saver, Standards for Landscape Architecture. McGraw-Hill, Inc., Singapore. - Landphair, Harlow C. & Fred Klatt, JR., 1999. Landscape Architecture construction. 3rd. ed., Prentice Hall PTR, New Jersey. - Lyall, Sutherland, 1992. Designing the new landscape. Thames and Hudson Ltd, London. - Reid, Grant W., 1987. Landscape Graphics. Whitney Library of Design, New York. - Tandy, Cliff, 1984. Handbook of Urban Landscape. The architectural Press Ltd, London. - Williams, Robin, 1990. The Garden Planning. Frances Lincoln Limited, U.S.
Supportive References	None.
Electronic Materials	None.
Other Learning Materials	None.

2. Required Facilities and Equipment

Items	Resources
Facilities (Classrooms, Laboratories, Exhibition Rooms, Simulation Rooms, etc.)	Lecture Hall, Studio Hall, Classroom, Computer Lab.
Technology Equipment (Projector, Smart Board, Software)	Computers, Data Show, Smart Board, Applications Software.
Other Equipment (Depending on the nature of the specialty)	None.

F. Assessment of Course Quality

Assessment Areas/Issues	Assessor	Assessment Methods
Effectiveness of teaching	Peer Reviewer	Direct (peer classroom observation according to the approved Rubric)
Effectiveness of students' assessment	Faculty/Instructor	Direct (analysis of CLOs assessment results and grade distributions)
Quality of learning resources	Students	Indirect (course evaluation survey)
The extent to which CLOs have been achieved	Faculty/Instructor	Direct (CLOs assessment and analysis of results according to CLOs targets)
	Students	Indirect (Students through course evaluation survey)
Commitment to learning and teaching strategies and assessment methods included in the program and course specifications	Peer Reviewer	Direct (Peer- classroom observation according to the approved Rubric in OC-QMS)
	Department Chair through Students Focus Groups	Indirect (Chair – survey questions to a focus group of students according to OC QMS)
Action Plan Continuity (Closing the Loop)	QAC (Quality Assurance Committee)	Direct (periodic review of course reports and submitting comments to course instructor/coordinator)
Instructor's Support to Students	Students	Indirect (course evaluation survey)

Assessor (Students, Faculty, Program Leaders, Peer Reviewer, Others (specify))

Assessment Methods (Direct, Indirect)



G. Specification Approval Data

COUNCIL /COMMITTEE	Department of Architecture Council
REFERENCE NO.	11
DATE	2023-05-09

Learning outcomes of this course, as well as CLOs/Teaching Strategies/Assessment Methods matrix have been evaluated and reviewed by multiple OC parties according to OC-QMS. You can access results of these final reviews by scanning the QR code on the right, which contains a link to the reviews on OC-E-QMS.



[Click Here](#)

